



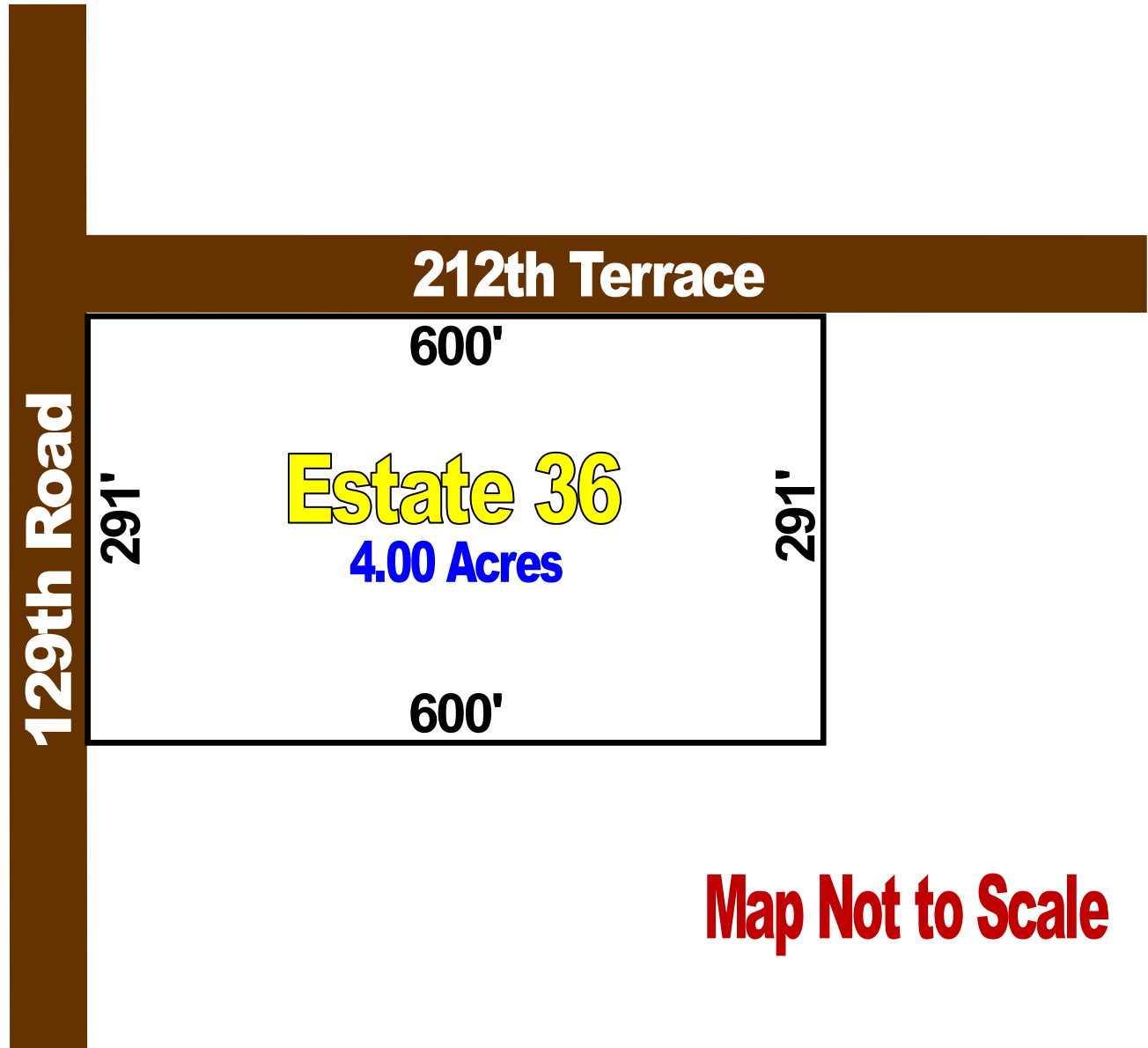
*Jim Jean Real Estate*



**352-339-4487**

4131 NW 28<sup>th</sup> Lane, Suite 1, Gainesville, FL 32606 ♦ www.JimJean.com ♦ Cell: 352-339-4487

***The Timbers Estate 36 Sales Plat***



**Map Not to Scale**

\*Refer to recorded plat for survey details

***Automatic, Non-Qualifying*** Seller Financing is available with **NO** Pre-Payment Penalties

| Estate | Acreage | Sales Price | Down    | Monthly | Rate  | Term     |
|--------|---------|-------------|---------|---------|-------|----------|
| 36     | 4.00    | \$69,995    | \$6,995 | \$550   | 9.50% | 25 Years |