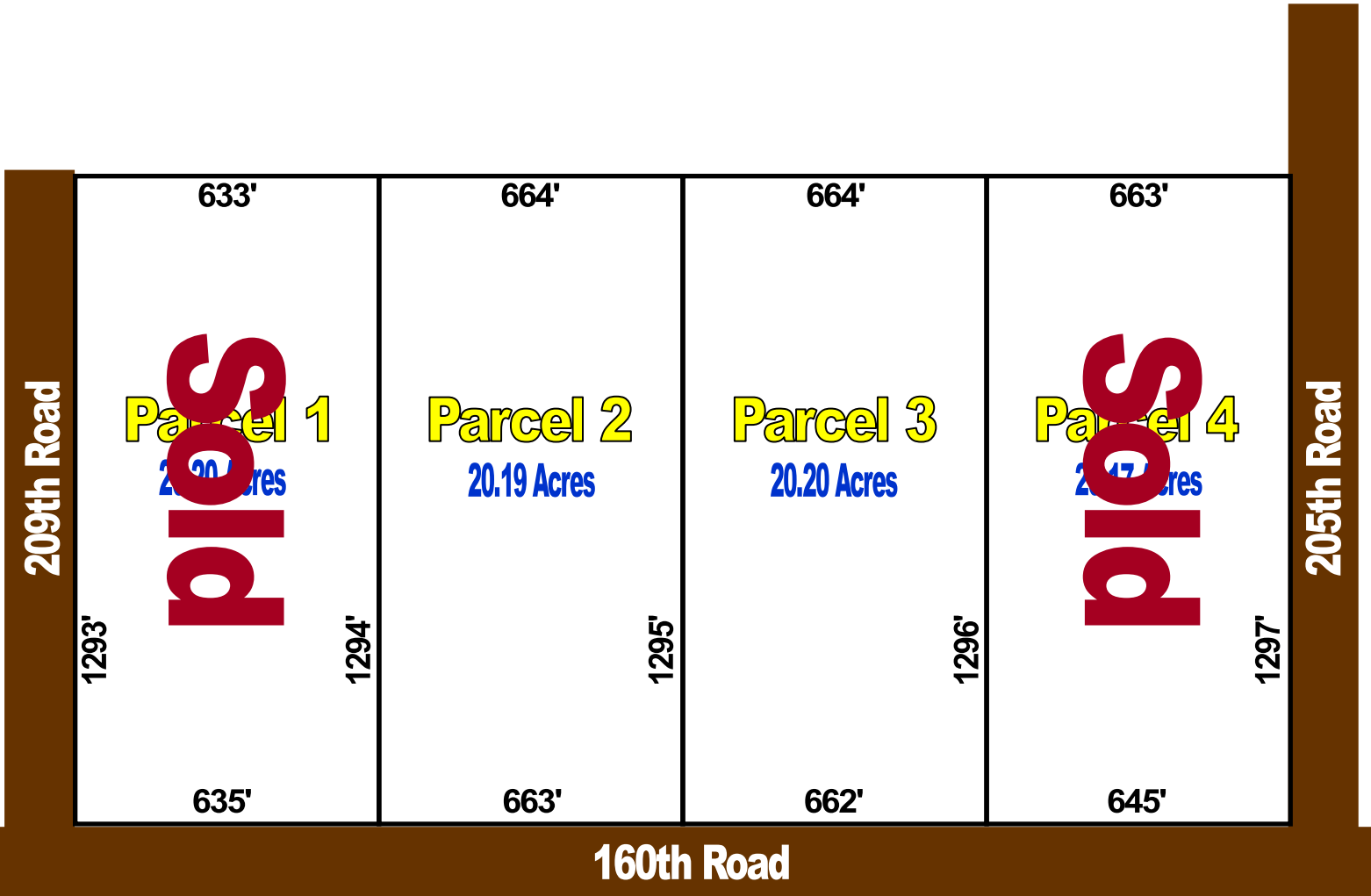




Hilltop Farms Sales Plat



*Refer to recorded plat for survey details

Automatic, Non-Qualifying Seller Financing is available with **NO** Pre-Payment Penalties

Parcel	Acreeage	Sales Price	Down	Monthly	Rate	Term
1	20.20	\$159,995	\$15,995	\$1,200	8.90%	25 Years
2	20.19	\$159,995	\$15,995	\$1,200	8.90%	25 Years
3	20.20	\$159,995	\$15,995	\$1,200	8.90%	25 Years
4	20.17	\$159,995	\$15,995	\$1,200	8.90%	25 Years