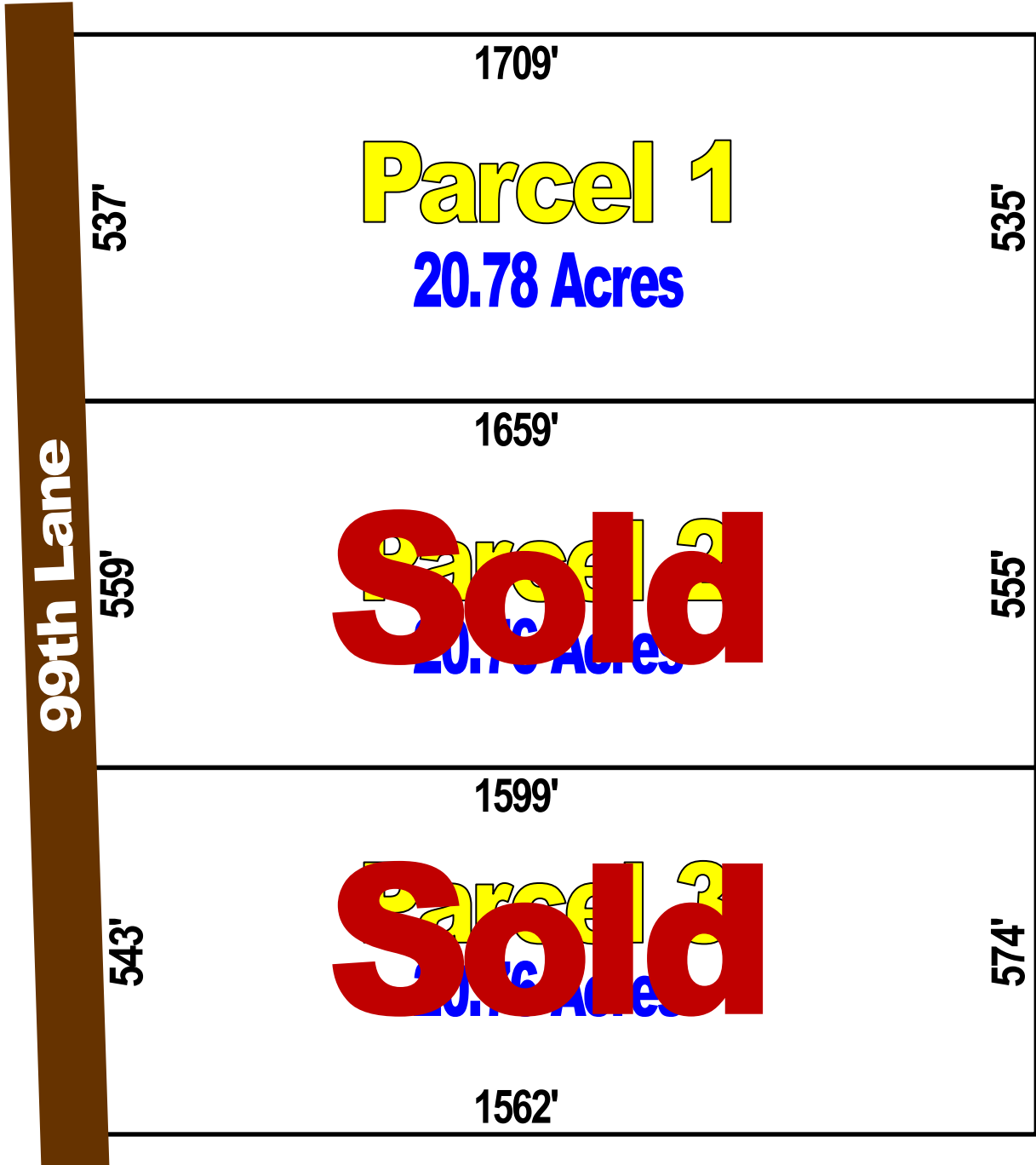




Ridgewood Estates Sales Plat



*Refer to recorded plat for survey details

Automatic, Non-Qualifying Seller Financing is available with NO Pre-Payment Penalties

Parcel	Acreage	Sales Price	Down	Monthly	Rate	Term
1	20.78	\$199,995	\$19,995	\$1,575	9.50%	25 Years