



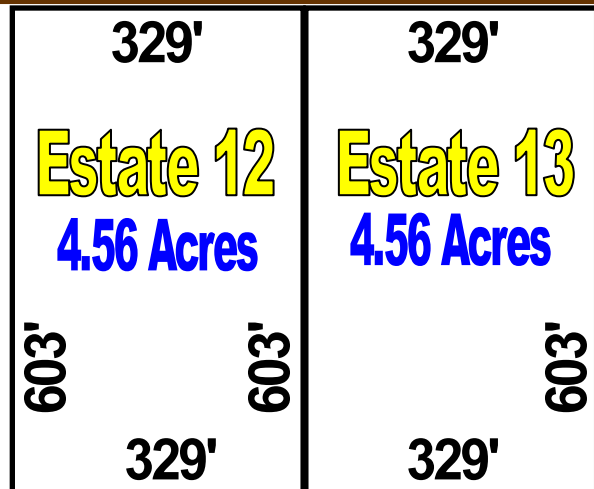
Dowling Oaks Sales Plat



Map Not to Scale

130th Terrace

229th Drive



132nd Street

*Refer to recorded plat for survey details

Automatic, Non-Qualifying Seller Financing is available with **NO** Pre-Payment Penalties

Estate	Acreage	Sales Price	Down	Monthly	Rate	Term
4	4.35	\$69,995	\$6,995	\$550	9.50%	25 Years
12	4.56	\$69,995	\$6,995	\$550	9.50%	25 Years
13	4.56	\$69,995	\$6,995	\$550	9.50%	25 Years