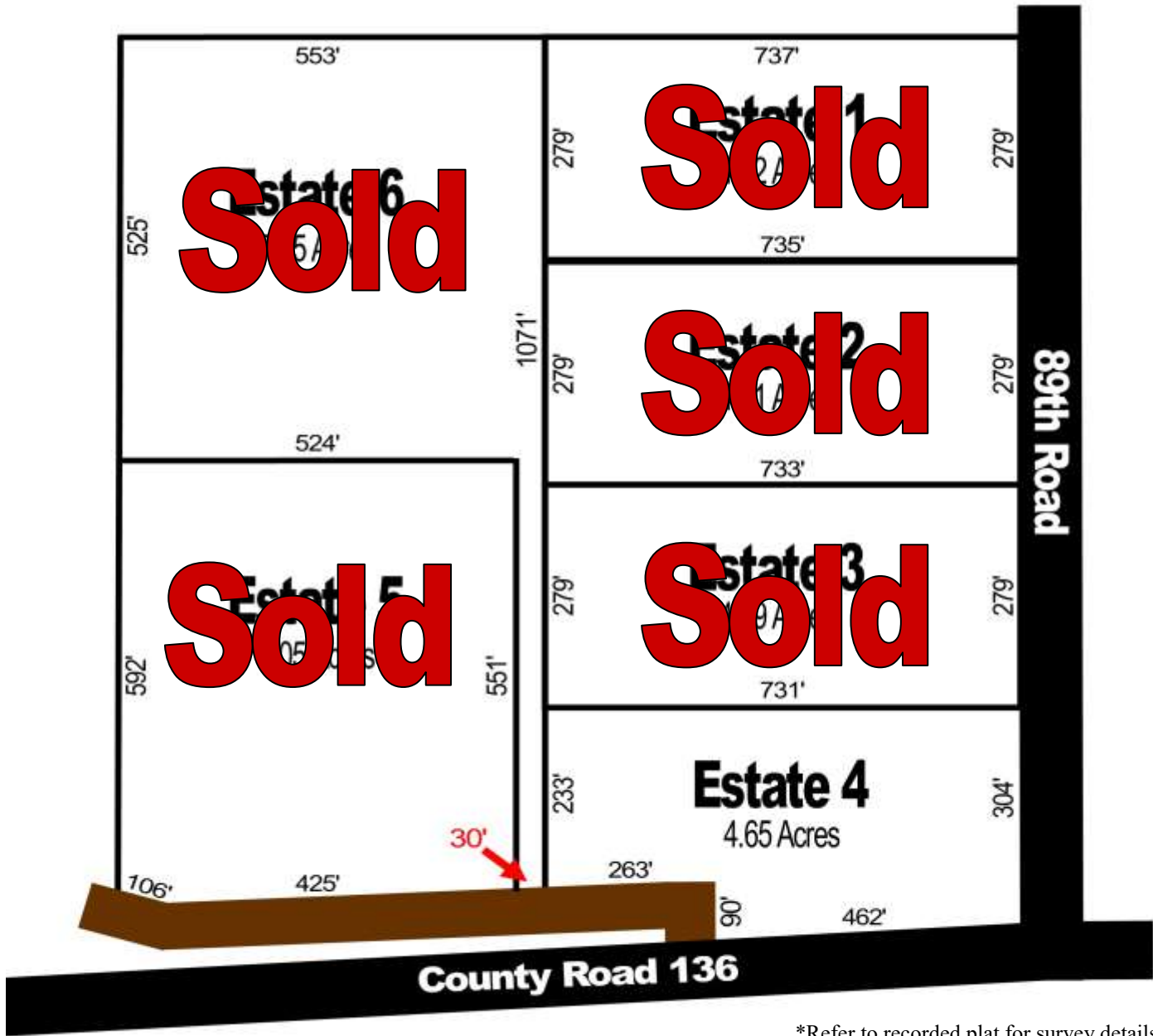




## Harley Estates Sales Plat



\*Refer to recorded plat for survey details

**Automatic, Non-Qualifying** Seller Financing is available with **NO** Pre-Payment Penalties

Estate	Acreage	Sales Price	Down	Monthly	Rate	Term
4	4.65	\$74,995	\$7,495	\$590	9.50%	25 Years