

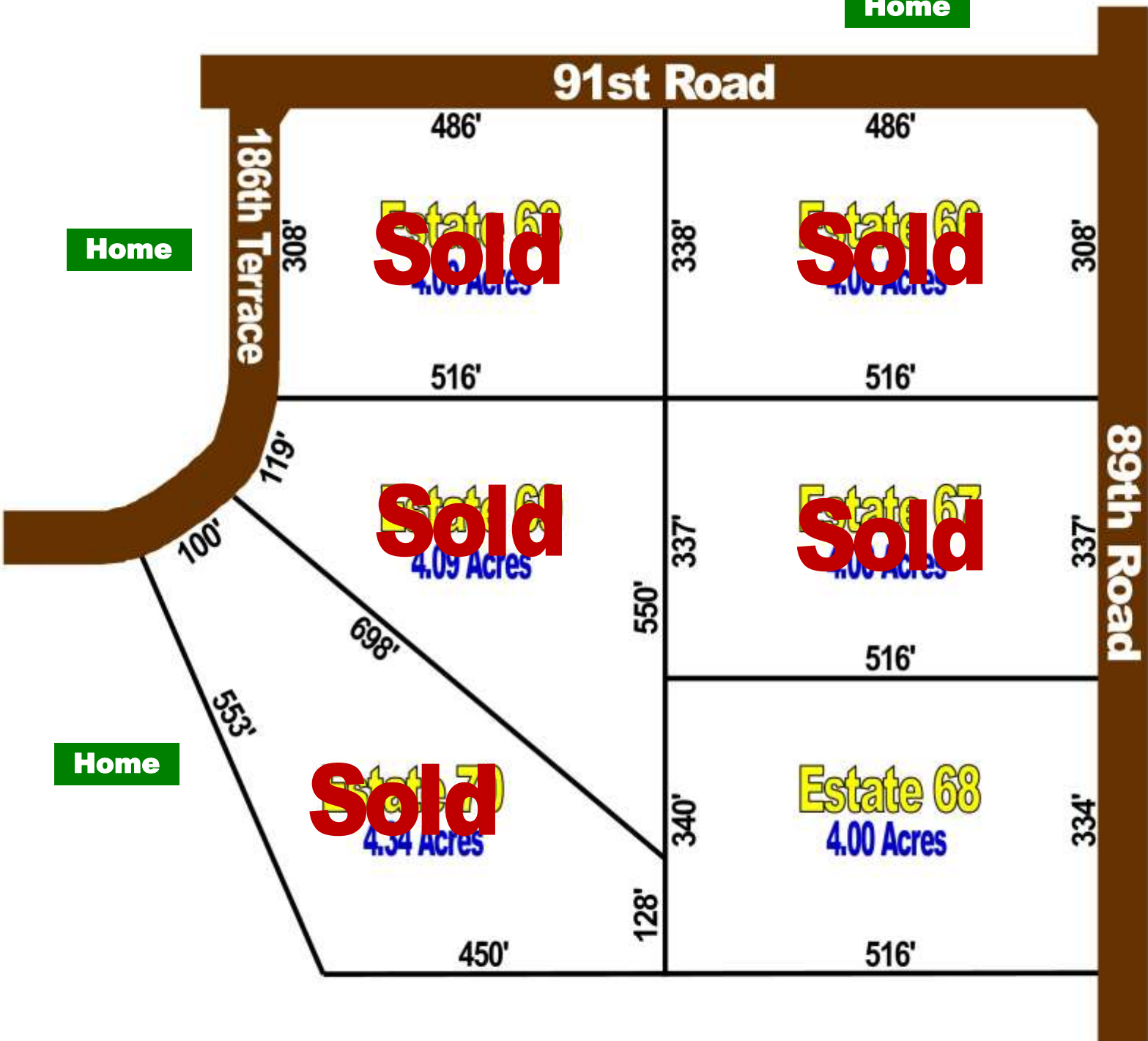


### Saddle Club Sales Plat

**Home**

**Home**

**Home**



*Automatic, Non-Qualifying* Seller Financing is available with **NO** Pre-Payment Penalties

Estates	Acreage	Sales Price	Down	Monthly	Rate	Term
63, 66, 67, 68, 69, 70	4.00+/-	\$73,995	\$7,395	\$585	9.50%	25 Years