



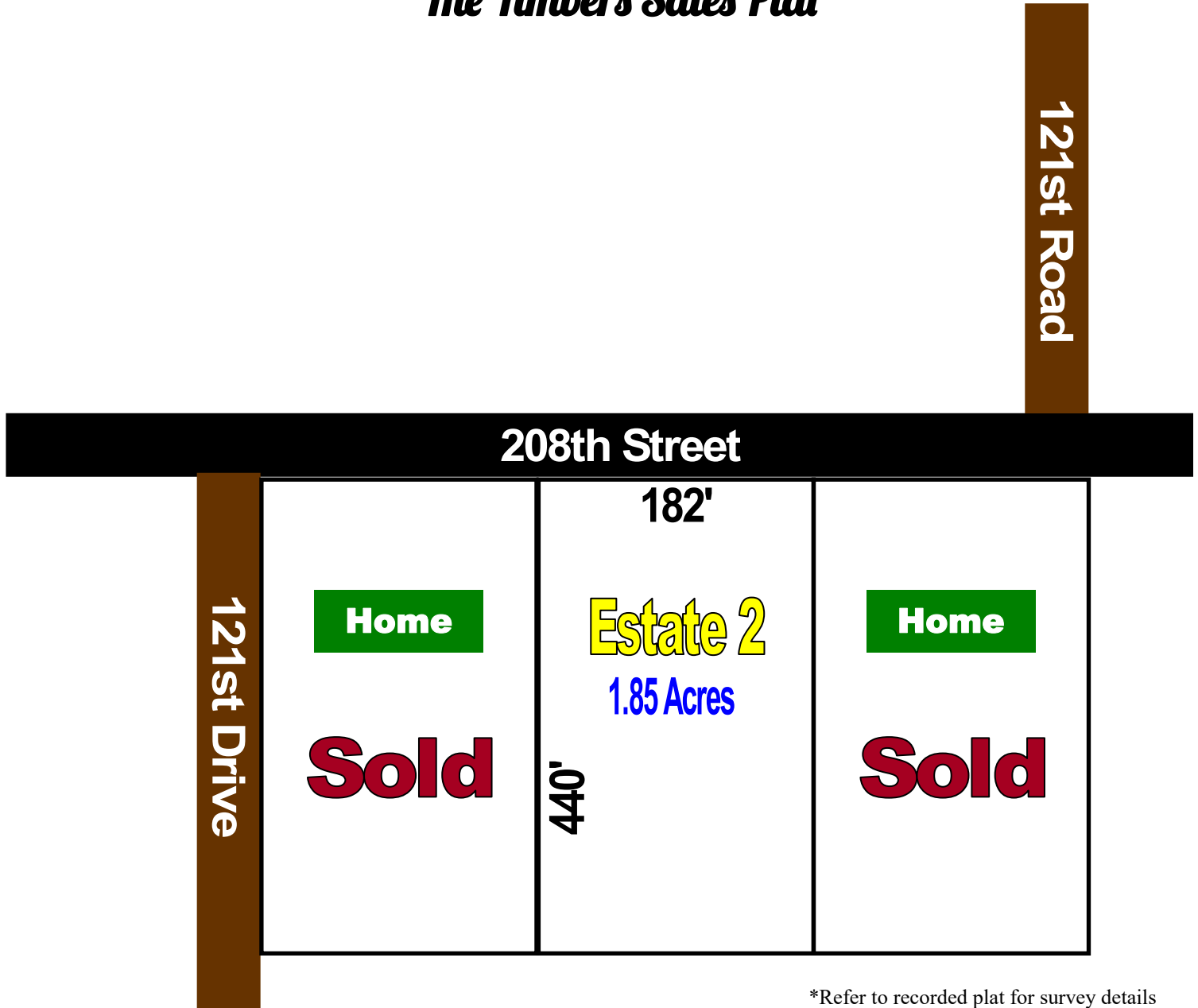
Jim Jean Real Estate



1-800-722-5326

4131 NW 28th Lane, Suite 1, Gainesville, FL 32606 ♦ www.JimJean.com ♦ Cell: 352-339-4487

The Timbers Sales Plat



*Refer to recorded plat for survey details

Automatic, Non-Qualifying Seller Financing is available with **NO** Pre-Payment Penalties

Estate	Acreage	Sales Price	Down	Monthly	Rate	Term
2	1.85	\$39,995	\$3,995	\$315	9.50%	25 Years