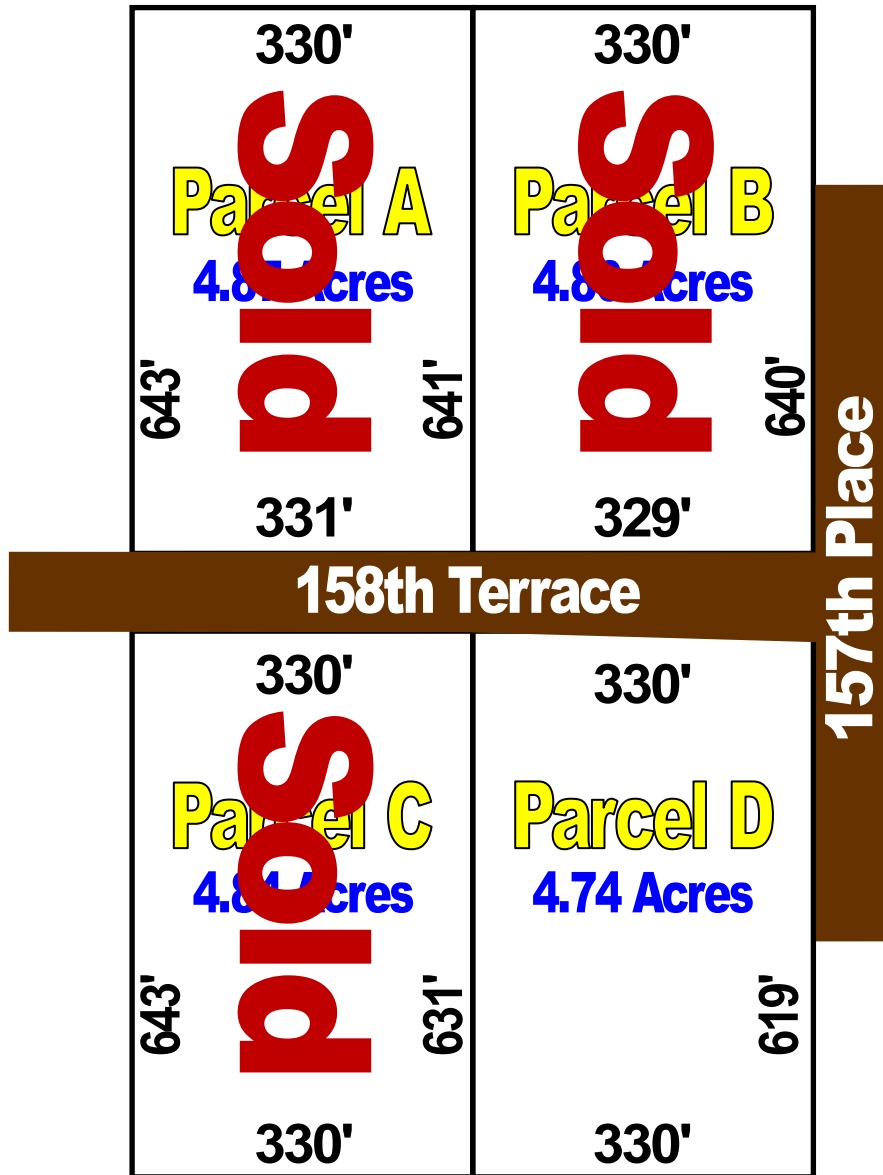




Harrison Estates Sales Plat



*Refer to recorded plat for survey details

Automatic, Non-Qualifying Seller Financing is available with **NO** Pre-Payment Penalties

Estate	Acreage	Sales Price	Down	Monthly	Rate	Term
A	4.87	\$59,995	\$5,995	\$450	8.90%	25 Years
B	4.86	\$59,995	\$5,995	\$450	8.90%	25 Years
C	4.84	\$59,995	\$5,995	\$450	8.90%	25 Years
D	4.74	\$59,995	\$5,995	\$450	8.90%	25 Years