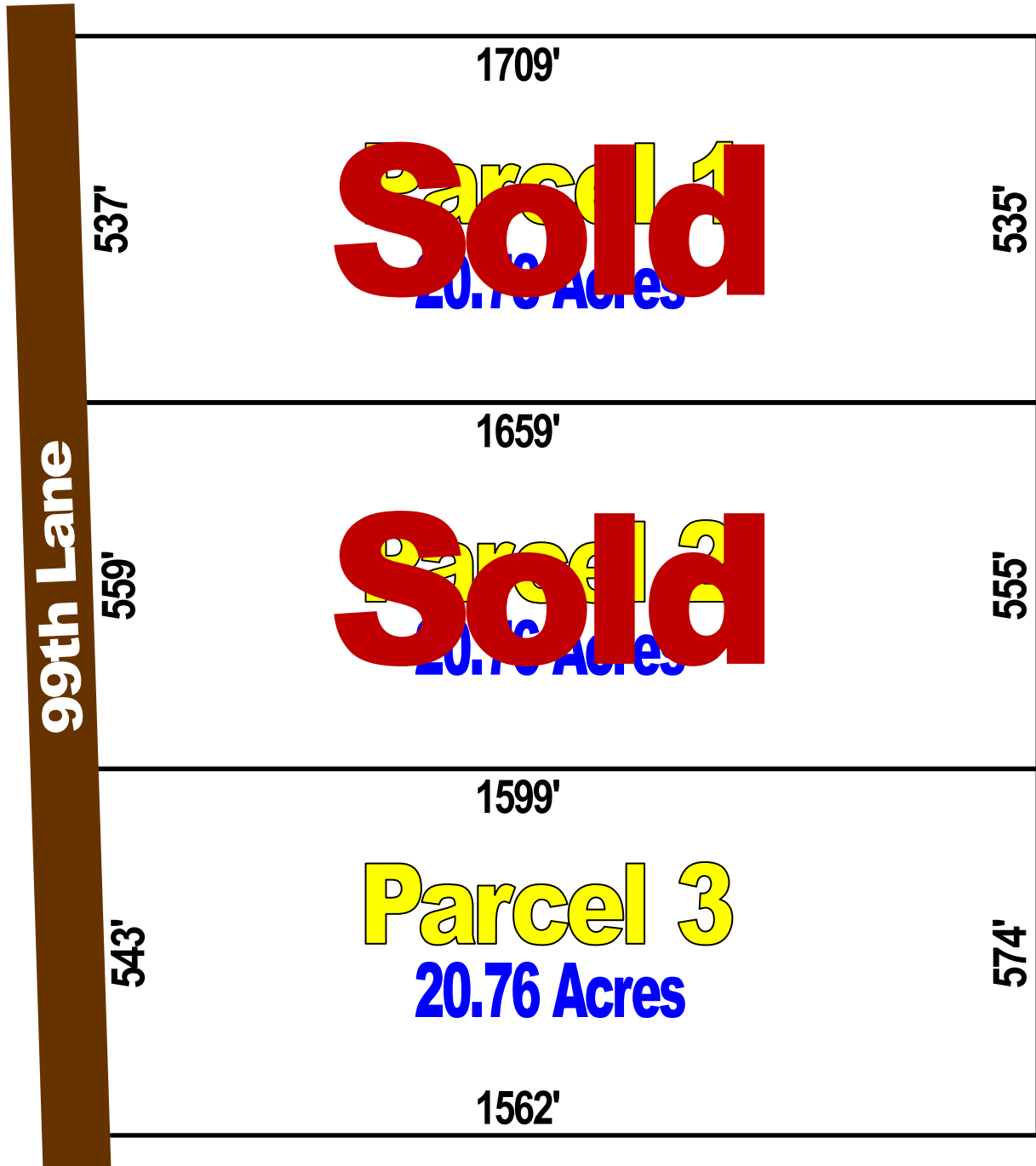




Ridgewood Estates Sales Plat



*Refer to recorded plat for survey details

Automatic, Non-Qualifying Seller Financing is available with **NO** Pre-Payment Penalties

Parcel	Acreage	Sales Price	Down	Monthly	Rate	Term
3	20.76	\$199,995	\$19,995	\$1,575	9.50%	25 Years