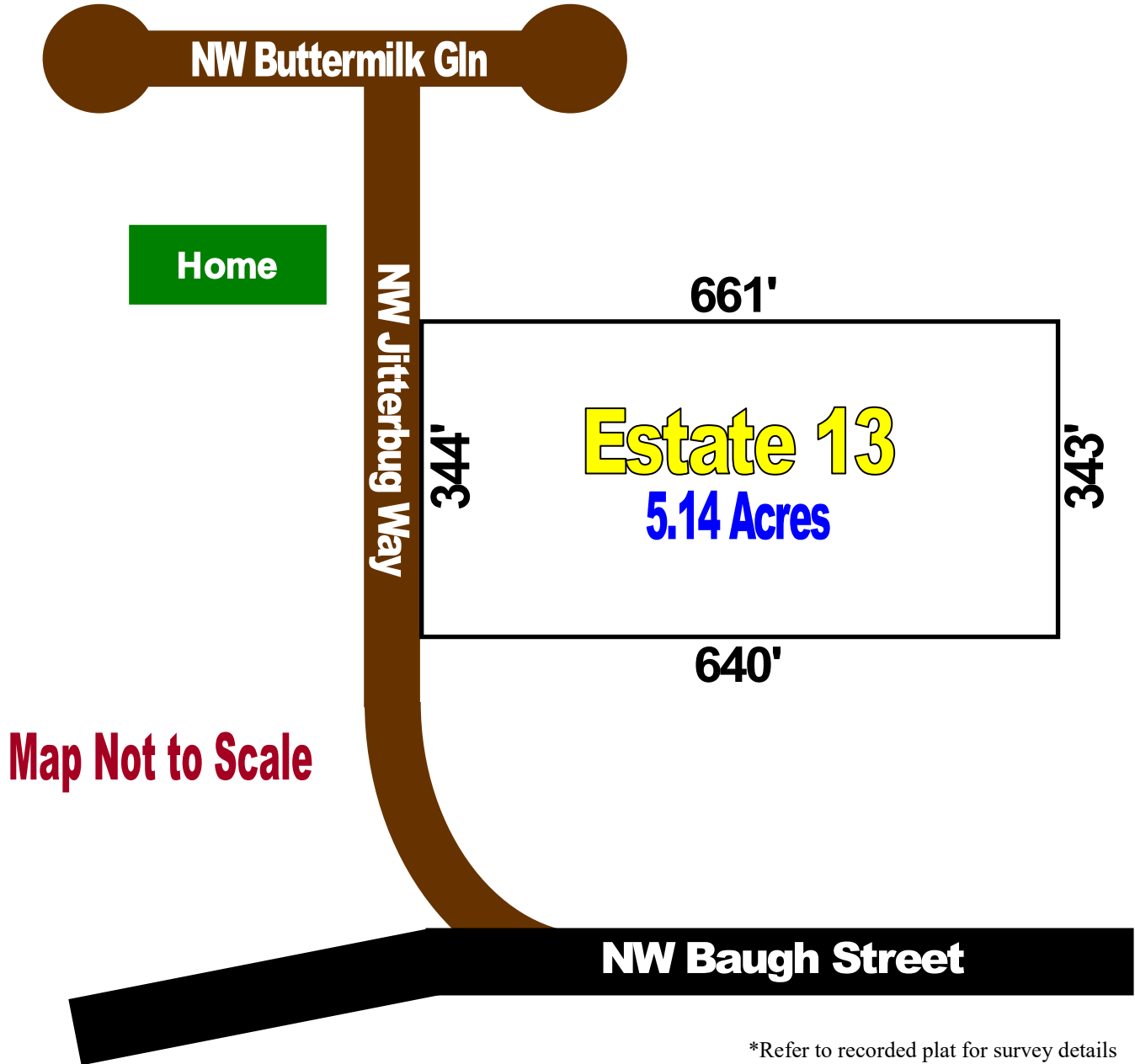




Suwannee Hills Sales Plat



*Refer to recorded plat for survey details

Automatic, Non-Qualifying Seller Financing is available with **NO** Pre-Payment Penalties

Estate	Acreage	Sales Price	Down	Monthly	Rate	Term
13	5.14	\$79,995	\$7,995	\$599	8.90%	25 Years