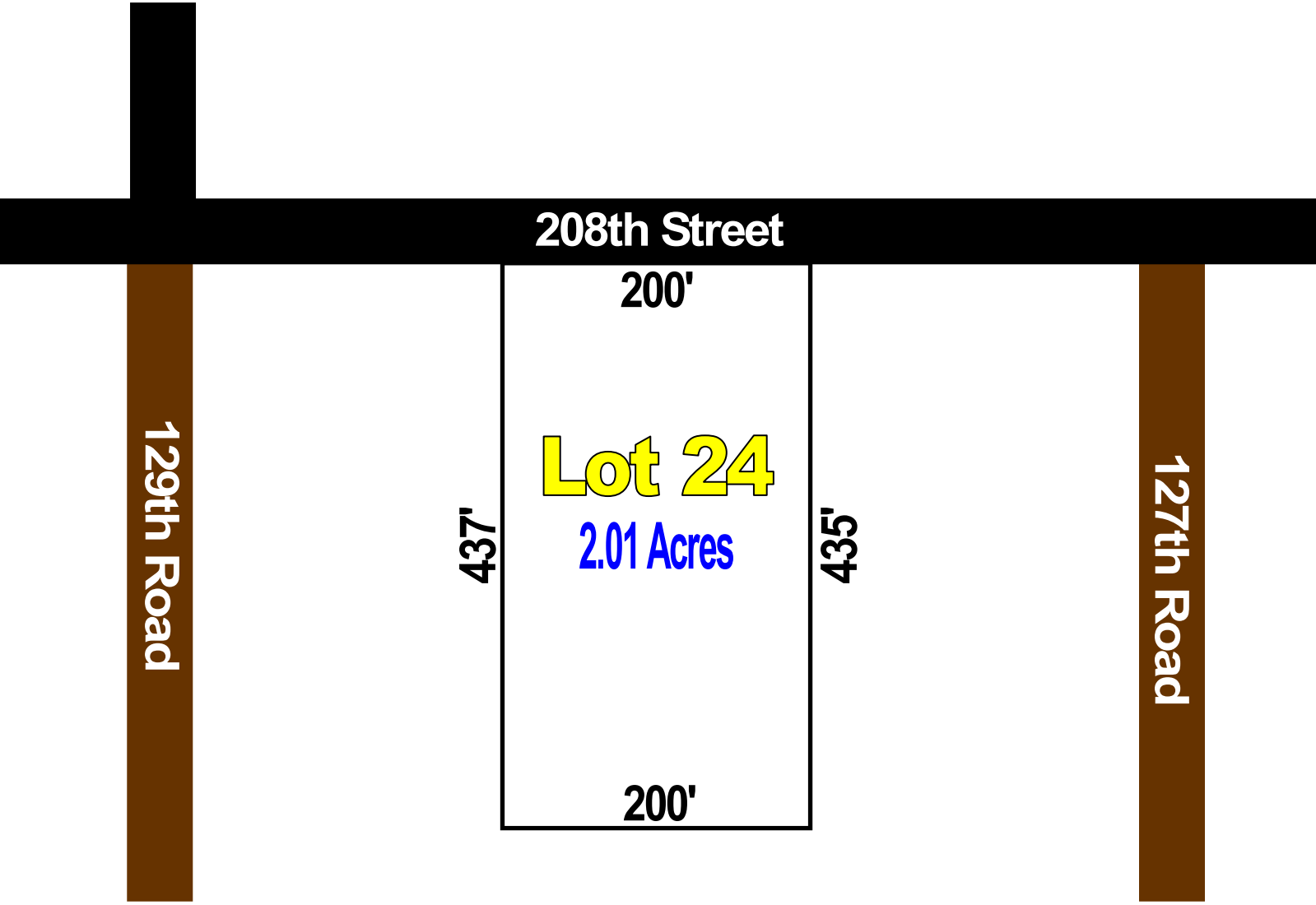




The Timbers Sales Plat



Map Not to Scale

Automatic, Non-Qualifying Seller Financing is available with **NO** Pre-Payment Penalties

| Estate | Acreage | Sales Price | Down | Monthly | Rate | Term |
|--------|---------|-------------|---------|---------|-------|----------|
| 24 | 2.01 | \$44,995 | \$4,495 | \$375 | 9.50% | 20 Years |

*Refer to recorded plat for survey details