



Jim Jean Real Estate

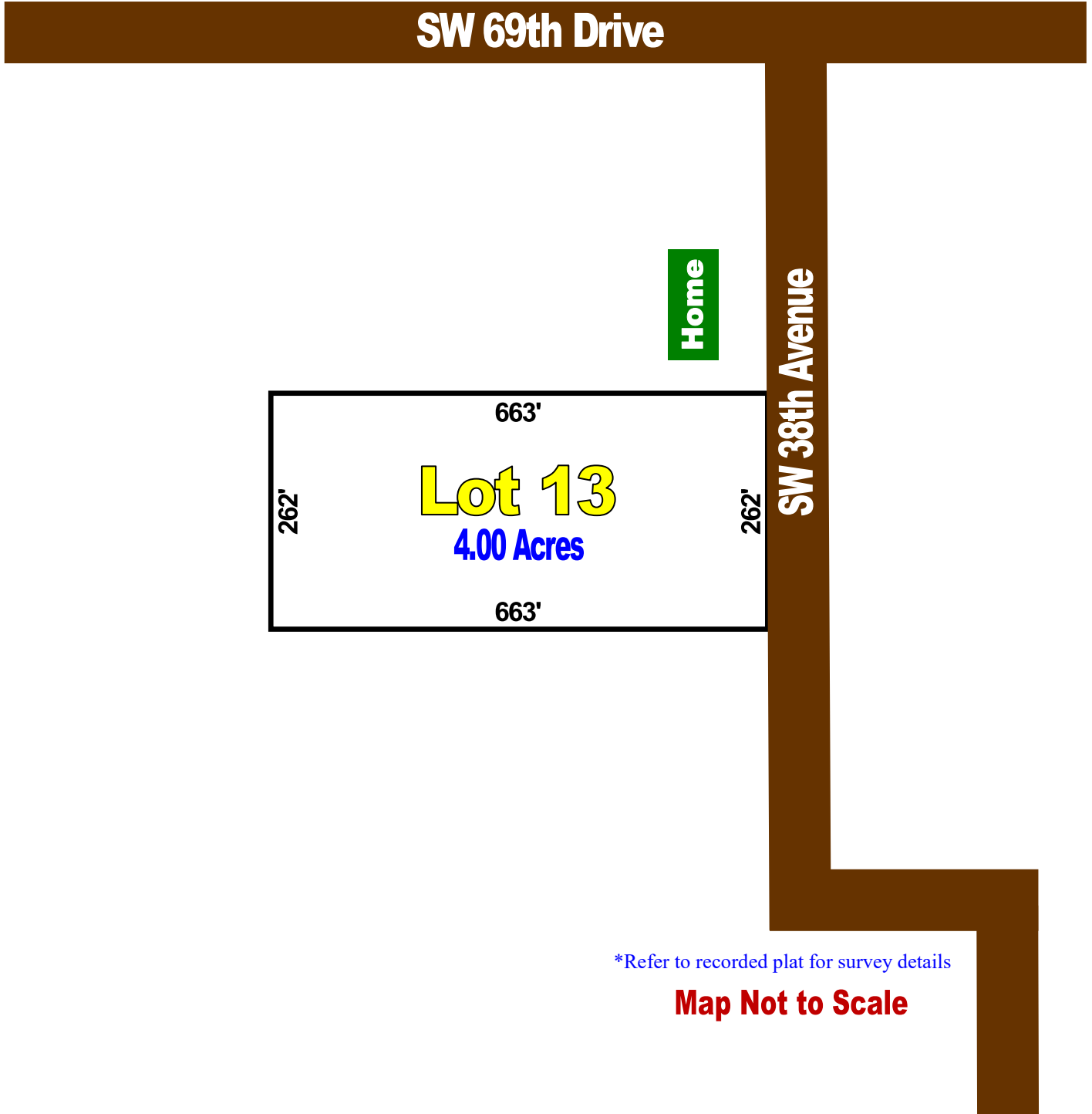
Lic. Real Estate Broker

1-800-722-5326



4131 NW 28th Lane, Suite 1, Gainesville, FL 32606 ♦ www.JimJean.com ♦ Cell: 352-339-4487

Burnette Farms Sales Plat



**Refer to recorded plat for survey details*

Map Not to Scale

Automatic, Non-Qualifying Seller Financing is available with **NO** Pre-Payment Penalties

| Estate | Acreage | Sales Price | Down | Monthly | Rate | Term |
|--------|---------|-------------|---------|---------|-------|----------|
| 13 | 4.00 | \$49,995 | \$4,995 | \$375 | 8.90% | 25 Years |